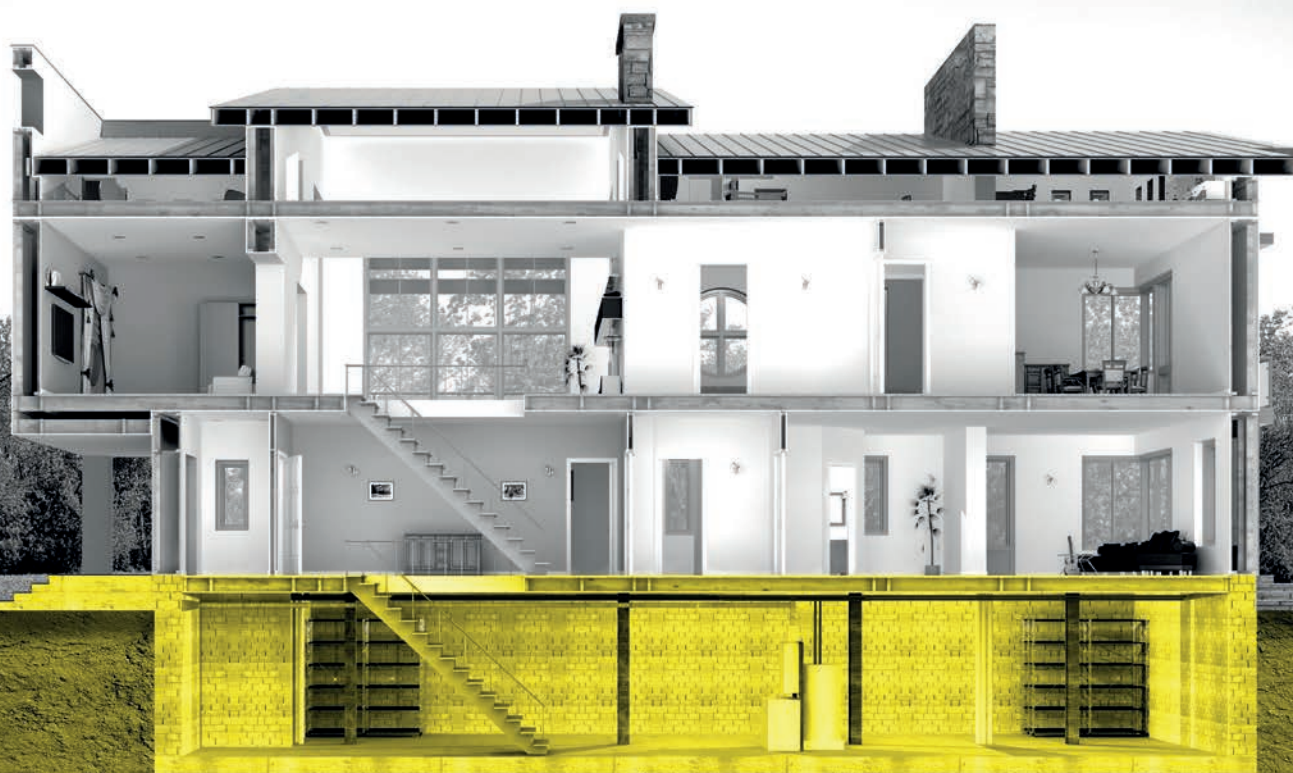
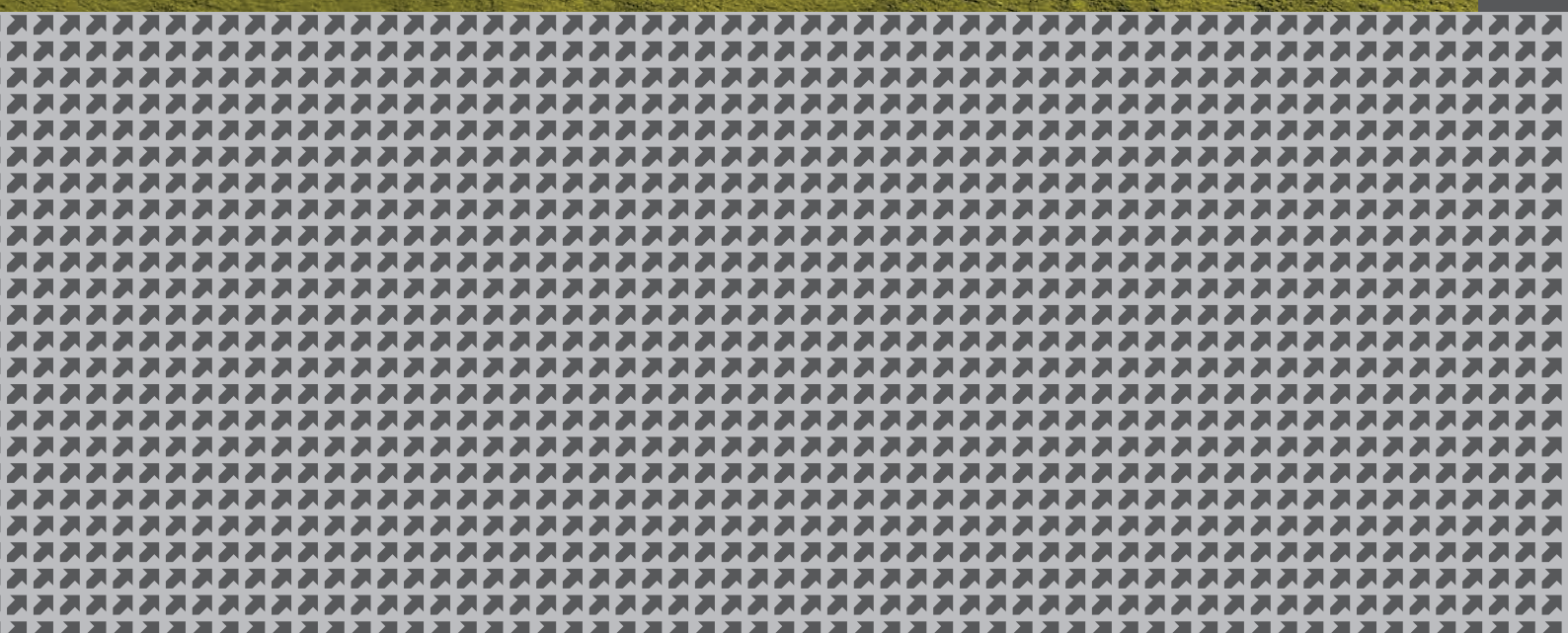


Delta Membranes

# CPD Seminar Synopsis



INNOVATION | MANUFACTURER | DESIGN | SOLUTION



## ABOUT US

# Delta Membrane Systems Limited

Delta Membrane Systems Limited is a manufacturer and provider of specialist structural waterproofing solutions, covering Types A, B and C waterproofing, combination waterproofing, damp proofing, basement drainage, flood resilience and ground gas protection.

We aim to deliver excellence by putting our customers at the heart of everything we do.

Delta unites innovative products with highly skilled waterproofing design specialists. Our in-house team of technical consultants support our clients in providing comprehensive, reliable, and expert advice, identifying, and mitigating risk and establishing opportunities for added value.

Our projects include commercial and residential structures, new-build and refurbishment, housing developments and civil infrastructure. Our technical consultants cater to a diverse client base, including architects, developers, contractors, sub-contractors, engineers, and homeowners all centred on latest industry guidance, current legislation, standards, and best practice.

Delta proudly supports the Women of Waterproofing Networking Group. An independent networking group that promotes gender equality in the waterproofing sector, seeking to inspire, retain and attract females.

Delivering world-class solutions, Delta is an impeccable partner on every project.



## INNOVATION MANUFACTURER DESIGN SOLUTION

Join Delta's Technical Team for our free of charge RIBA and CIWEM approved CPD Seminars suitable for Architects, Engineers, Quantity Surveyors, Specifiers, Developers, Contractors and Waterproofing Professionals for commercial, industrial and residential projects and developments.

Held at your offices in a "learn and lunch" setting, at times/locations to suit your business needs or online using Zoom or Teams platforms.

All our seminars will give you the perfect resource to keep you up to date with the latest of legislations and design philosophies in the

RIBA Double Point Accredited CPD Seminars

Seminar durations -	1 hour
Delivery -	In person or remote
Cost -	Free



## Seminars

### **BS 8102:2022 - Waterproofing Below Ground Structures**

Duration - 1 hour with answer and question session

Format In-person or online

On Demand Available



In this informative CPD presentation, we aim to equip Architects, Designers, and Specifiers with an in-depth understanding of structural waterproofing methods. This involves introducing you to the key elements and factors a waterproofing design specialist utilizes to build a solid and reliable waterproofing solution, compliant with BS 8102:2022, the British Standard for the waterproofing industry. The discussion will cover various topics including Types A, B & C, which represent different forms of structural waterproofing systems available in the UK market. We will also explain how to achieve the environmental grades defined within British Standard 8102:2022. We will shed light on specifying combination waterproofing systems in below-ground structures to reach the required environmental grade. Additionally, the presentation will cover remedial strategies to eliminate design risks.

### **Waterproofing Existing Basements**

Duration - 1 hour with answer and question session

Format In-person or online

On Demand Available

This CPD presentation seeks to offer Architects, Designers, and Specifiers an in-depth understanding of structural waterproofing for existing basements and cellars. It explores the client's needs in designing and specifying waterproofing systems while elaborating on the protection levels achievable. The focus is also on understanding the features, benefits, and options available for a robust solution. The presentation by Delta emphasizes creating a solution that adheres to the British Standard 8102:2022, a recognized code of practice in the waterproofing industry. It ensures designs meet at least the minimum requirements. The topics covered include achieving different protection levels, understanding why some waterproofing systems fail, and finding solutions to rectify failed systems in compliance with the set standards.

### **Structural Waterproofing Podium Decks and Buried Roofs**

Duration - 1 hour with answer and question session

Format In-person or online

Designing a waterproofing system for podium decks, buried roofs, balconies, and terraces can be fraught with challenges. Deep understanding of construction and structural waterproofing is essential to avoid common pitfalls. Considerations of differential movement and drainage should be integral parts of the building design process. This CPD presentation's goal is to equip Architects, Designers, and Specifiers with a technical understanding of achieving successful design.

**GET IN TOUCH**

[info@deltamembranes.com](mailto:info@deltamembranes.com) | 01992 523 523

### **Flood Resilience (PFR)**

Duration - 1 hour with answer and question session

Format In-person or online

On Demand Available



Delving into the realm of flood resilience, resistance, and recoverability, we'll discuss the historical use of various technologies in below ground structural waterproofing, applicable in multiple situations from home to business structures. Moreover, this Continuing Professional Development (CPD) presentation provides valuable knowledge for Architects/Designers in the creation of sturdy flood-resistant solutions. The ultimate objective of the CPD is to enrich Architects/Designers with a comprehensive comprehension of flood resistance, resilience, and recoverability concepts.

### **Cold Liquid Applied Waterproofing**

Duration - 1 hour with answer and question session

Format In-person or online

The CPD presentation offers a comprehensive technical overview about the use of cold liquid applied systems for structural waterproofing in the construction industry, intended for Architects, Designers, and Specifiers. It aims to provide a waterproofing solution that aligns with the British Standard BS 8102:2022, a recognized code of practice in the waterproofing sector. Key topics discussed include the significance of choosing a suitable continuous waterproofing solution, design considerations, suitable build-ups for cold applied systems, and the associated components and detailing. To conclude, the seminar provides useful guidance related to the topic.

### **Waterproofing - The Use of Concrete Combinations Type A, B and C**

Duration - 1 hour with answer and question session

Format In-person or online

This CPD presentation is designed to equip Architects, Designers, and Specifiers with a comprehensive understanding of the factors a waterproofing design specialist considers to formulate a robust solution that aligns with the standards of BS 8102:2022 and BS 8500-1:2023. The seminar is crafted to educate, enrich, and engage delegates, focusing on topics like below ground waterproofing, combined waterproofing (two systems), product compatibility, and how to determine the right waterproofing solution for a structure. The seminar concludes with an interactive Q&A session, allowing attendees to address their queries directly to the presenter.

We offer a variety of additional educational seminars (available in-person, online and On Demand). These are designed to enhance your knowledge and skills and are available for your participation.

**GET IN TOUCH**

info@deltamembranes.com | 01992 523 523

**HEAD OFFICE**

Delta House, Merlin Way, North Weald, Epping, Essex, CM16 6HR  
01992 523 523 | [info@deltamembranes.com](mailto:info@deltamembranes.com) | [www.deltamembranes.com](http://www.deltamembranes.com)